

Antony Muia

New Works

Opening drinks

Tuesday 01.08.06

5.30-7.30

01-12 August 2006

@ fortyfivedownstairs

45 Flinders Lane

Melbourne 3000

Tue to Fri 11.00-5.00

Sat 12.00-4.00

BRIGITTE BRAUN
ART DEALER





1. Cherry blossom



3. Two boys on couch



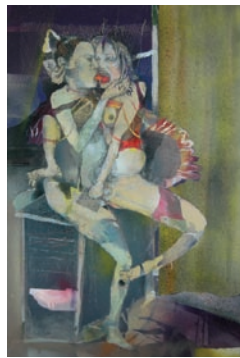
5. Girl with white belt



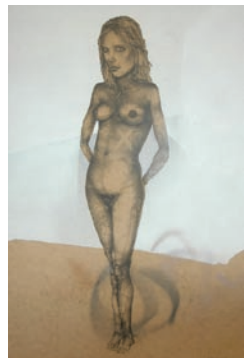
6. Untitled



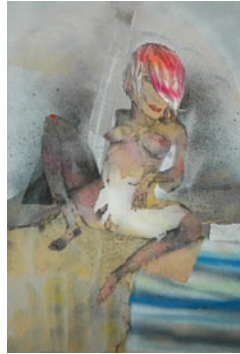
4. Rainbow



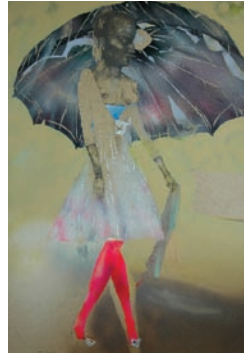
7. Couple



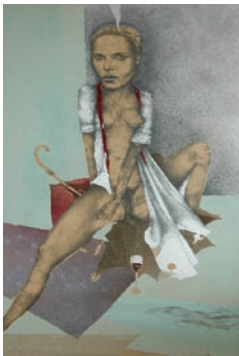
8. Girl



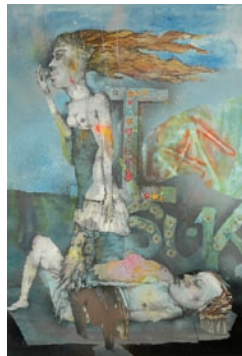
12. Pink



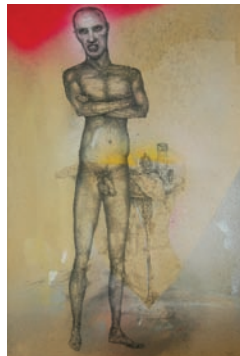
13. Pink stockings



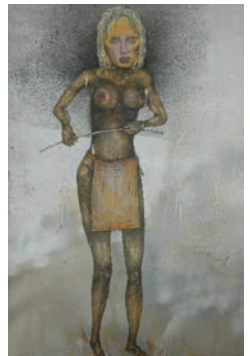
14. Red wine



15. Strawberry blond



16. Untitled man



17. Willow

Antony Muia

Biography

Born

1966 Perth, WA

Education

1989 Diploma in Fine Arts Claremont School of Art

Solo Exhibitions

- 2006 New Works, Fortyfivedownstairs, Melbourne
- 2005 Exhibitionist, Artplace, Perth
- 2002 New works on paper, Artplace, Perth
- 2000 Works on paper, Artplace, Perth
- 1999 Drawings, Kalla Yeedit Gallery, Midlands
- 1998 Works on paper, Dick Bett Gallery, Hobart
- 1997 Lounge Paintings, Delaney Galleries, Perth
- 1996 Some Girls, Delaney Galleries, Perth
- 1994 Works on paper, Dick Bett Gallery, Hobart
- 1992 Works on Paper, Gomboc Gallery, Perth
- 1991 Works on Paper, Gomboc Gallery, Perth
- 1990 Works on Paper, Gomboc Gallery, Perth

Selected Group Exhibitions

- 2004 Artplace Group Show 2004, Artplace, Perth
Melbourne Art Fair 2004, Melbourne, VIC
- 2003 Artplace Group Show 2003, Artplace, Perth, WA
- 2002 Artplace Group Show 2002, Artplace, Perth, WA
Melbourne Art Fair 2002, Melbourne, VIC
- 2001 Mundaring Arts Centre, Mundaring, WA
- 1999 Mundaring Arts Centre, Mundaring, WA
- 1998 Mundaring Arts Centre, Mundaring, WA
- 1996 Out of Australia, curated by John Stringer,
PICA, Perth, WA
- 1995 Generation, Delaney Galleries, Perth, WA
- 1991 Tresillian Drawing Prize, Tresillian Centre, Perth, WA
- 1990 Recent Acquisitions, Art Gallery of Western
Australia, Perth, WA

Awards

- 1991 Tresillian Art Award, Watercolour
- 1989 Tresillian Art Award, Watercolour
- 1981 Kelmscott Art Fair, 2nd Prize Painting

Publications

- 2005 Judith McGrath "Invitation Art Acquisition
Exhibition", Artseen, February
Judith McGrath, "Previews" Australian Art
Collector, issue 32 p235
Ric Spencer, 'Domestic life laid bare'
The West Australian, 12.4.
Gail Robinson, 'Art of arousal' Sunday Times '17.4.
- 2002 Robert Cook "Sex in the real world" In the picture
p12, The West Australian. 2nd November
- 2000 David Bromfield, On Show, The West Australian.
25. November
Judith McGrath, 'Antony Muia', Artseen, November
- 1996 Artists in Residence, John Stringer,
Richard Woldendorp
David Bromfield, "Building Blocks..." On Show,
The West Australian
- 1993 A Spirited Place, Judith Hugo
- 1991 David Bromfield, "Fine line between art and
craft..." On Show, The West Australian

Collections

Art Gallery of Western Australia, University
of Western Australia, Edith Cowan University,
Murdoch University, Royal Perth Hospital,
Kerry Stokes, City of Wanneroo

Drawing Life

In the hands of an artist like Antony Muia, the line has a life of its own. Line is fundamental to his art, it takes us along a path that dances across the surface of his work, and leads us to the edge where reality meets fantasy.

Muia's imagery hints at the curious and voyeuristic. However, what at first seems grotesque, on close inspection, becomes more interesting as we discover the beauty in his use of line. His compositions depict slice-of-life scenarios from mainstream and marginal aspects of contemporary society. They are non-judgemental, as his work is as much about life as it is about drawing.

Muia's line suggests a mood and enriches the surface; it twists into delicate lace or turns into a rounded breast. His images always involve figures, nude or partially clad, with articulate hands and delicate feet and eyes that stare into space or glare back at you. He presents confident women that boldly stand tall or pose demurely under an umbrella, arrogant men that loll about or stand with arms across the chest daring you to measure him up, and ambiguous figures that fit any narrative you devise.

The artist delights in making marks with black ink, graphite pencil or anything that comes to hand. Here he works on prepared MDF board, employs stencils, stickers and spray paint, draws on and into the surface, and leaves areas of bare board exposed. The sheen and spray pattern of the paint, the collaged material and scratches made during their removal, all create interesting textural lines and effects. Where stencils overlap or the paint covers a previous embellishment, an edge line remains hinting of what lay beneath. These effects act as a memory of an earlier idea or effort and provide a sense of continuity in the progression of the work. They also serve to re-energize the artist as he reacts to their presence by drawing back into the image with pencil. It's easy to believe that during this stage of the developing drawing, the line is directing the artist's hand instead of the other way around.

Some viewers will find his imagery confronting and his work unpalatable. Others will see the excellent use of drawing and feast on its richness.

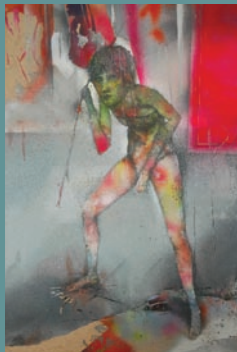
Antony Muia takes his line along an intriguing path to the edge.

Judith McGrath, 2006.

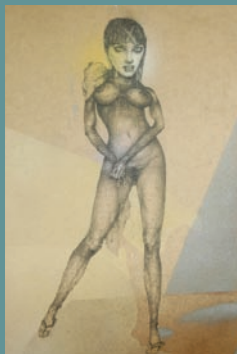
- 1 **Cherry blossom** 2006
mixed media
90x120cm
- 2 **Orange** 2005
(Cover Image)
mixed media
91x122cm
- 3 **Two boys on couch** 2005
mixed media
91x122cm
- 4 **Rainbow** 2006
mixed media
120x90cm
- 5 **Girl with white belt** 2006
mixed media
120x90cm
- 6 **Untitled** 2006
mixed media
122x91cm
- 7 **Couple** 2006
mixed media
90x60cm
- 8 **Girl** 2006
mixed media
90x60cm
- 9 **Girl with umbrella** 2006
mixed media
90x60cm
- 10 **Hunter** 2006
mixed media
90x60cm
- 11 **Nude** 2006
mixed media
90x60cm
- 12 **Pink** 2006
mixed media
90x60cm
- 13 **Pink stockings** 2006
mixed media
90x60cm
- 14 **Red wine** 2006
mixed media
90x60cm
- 15 **Strawberry blond** 2006
mixed media
90x60cm
- 16 **Untitled man** 2006
mixed media
90x60cm
- 17 **Willow** 2006
mixed media
90x60cm



9. Girl with umbrella



10. Hunter



11. Nude

BRIGITTE BRAUN ARTDEALER

15 Atkinson Close
Windsor 3181
+61 3 9521 1517
0417 184 260
artplace@iinet.net.au
www.artplace.com.au